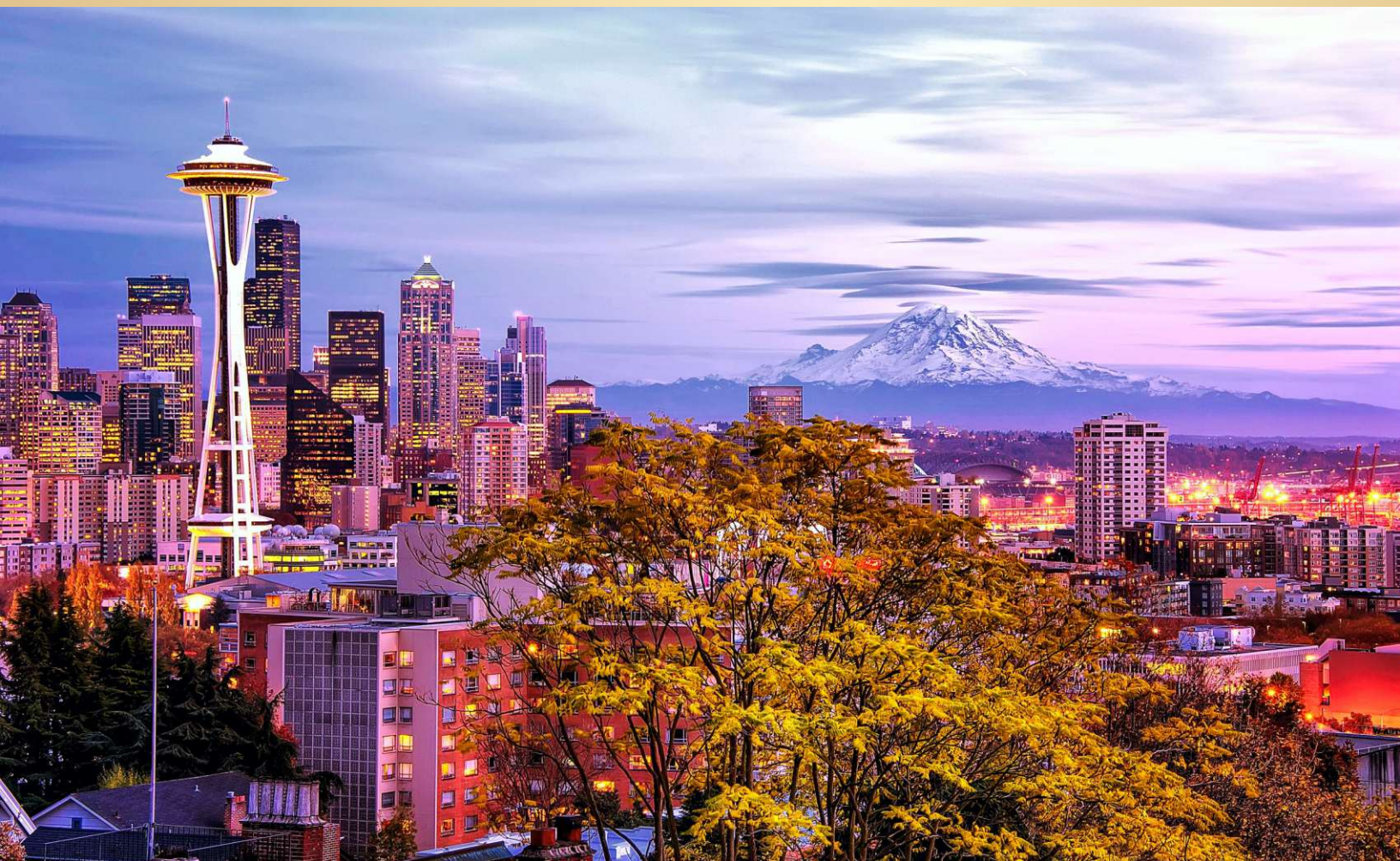


# ANNUAL MEETING

**SEATTLE, WASHINGTON**  
**MAY 2 - 5, 2018**



**LADC.ORG**





## *A Message from the President*

We are very pleased to confirm the LADC Annual Meeting will be held in Seattle, Washington May 2-5, 2018. For those fortunate to have previously visited the Emerald City, nestled along Puget Sound and against the magnificence of Mount Rainier, this opportunity to reacquaint with Seattle and its many offerings will hopefully induce a return visit. For those who have not before had that good fortune, attendance at our annual meeting affords an opportunity to experience and enjoy a very dynamic urban city, with a casual flair, an “organic” feel, if not outright laid back. If your flight into Seattle (SeaTac) approaches from the east, the sight of Mount Rainier sets the tone for this memorable venue.

We have selected The Fairmont Olympic Hotel for our stay, which will serve as the venue for our opening reception and CLE meetings. The Fairmont is a superb property offering the amenities one would expect in such a great location and fabulous setting.

Our CLE program will be top shelf, put together by Professors Bill Corbett and Dane Ciolino, occupying your mornings, though saving your afternoons for exploring all that Seattle and the surrounding areas have to offer. We are privileged and very pleased that Judge Eugene Davis, United States Fifth Circuit Court of Appeals; Justice Scott Crichton, Louisiana Supreme Court and Judge Marilyn Castle, 15th Judicial District, will join us in Seattle and, amongst others, will provide CLE presentations.

Tours of the magnificent Chihuly Garden and Glass (Seattle Center) and of the Seattle Underground are in place. Our closing dinner is set in the outstanding Canlis Restaurant, a 4.5++ star rating which should make for a truly wonderful dining experience with breathtaking views.

The acclaimed Pike Place Market, a short walk from the Fairmont, has an array of unique shops and fabulous restaurants, including the legendary The Pink Door, amongst others, and Seattle Underground. Certainly to be included is another and personal favorite, Shuckers Oyster Bar, a pub adjacent to the Fairmont. Should you venture a bit north of the city, Anthony's in Everett for fresh sockeye salmon is outstanding. Though Louisiana food sets the standard, the Pacific Northwest's cold water offerings are mighty, mighty good.

Puget Sound offers great cruising opportunities, and to its west is the Olympic peninsula and the Olympic National Park. Lake Washington and Lake Union offer wonderful water outings. With more than a little frivolity, there is the engaging “Ride the Duck” which starts from the Space Needle (a must visit), travels in and about Seattle, including motoring on Lake Union, skimming by Gas Works Park and on to the setting where a segment of “Sleepless in Seattle” was filmed. If water is not your thing, spectacular Mount Rainier to the east awaits. Mount Rainier National Park has a wonderful tour, affords some leisurely or serious hiking or, and we note, for those more adventuresome, we will be in Seattle at the start of the climbing season.

For the flight enthusiasts, there is the world's largest private air and space museum, the highly acclaimed Museum of Flight or perhaps the Boeing Future of Flight and Assembly tour at Paine Field, Everett. The finery of Chateau Ste Michelle and Columbia Winery, some of Washington's finest, are in nearby Woodinville.

The Kingdome is long gone, replaced by Safeco Field, home of the Mariners, a fabulous venue for taking in a ball game. During our stay, the Oakland Athletics come to town for a three-game series.

This opportunity provides for additional and personal directed excursions, side or follow on trips. One could travel by ferry across the Strait of Juan de Fuca from Port Angeles - perhaps see an Orca or two, to British Columbia and on to Vancouver, Victoria or perhaps Sooke Harbour; visit beautiful Whidbey Island or the San Juan islands, or perhaps an Alaskan cruise could be in the offing, book passage and depart from Seattle's Cruise Harbor. There are other innumerable options in the northwest, which may strike your fancy. We anticipate Seattle will be a memory creating journey.

We suggest that you contact Kimberly Zibilich to take the opportunity to join with us as we visit one of the premier and vibrant destinations in the United States.

*Ralph E. Kraft* LADC President



# SEATTLE, WASHINGTON

Known for its eclectic neighborhoods, waterfront views and easy access to mountains and green spaces, Seattle has forged an identity that capitalizes on its unusual juncture of outdoor and urban pleasures.

## Our Hotel . . . **FAIRMONT OLYMPIC HOTEL**

Listed on the National Register of Historic Places, Fairmont Olympic Hotel has been a landmark in the Northwest since opening in 1924. Ideally located in the heart of downtown Seattle, Washington's preeminent hotel is just footsteps from the area's finest shops, restaurants and entertainment attractions.

The LADC has reserved a block of deluxe king rooms based upon availability. King deluxe rooms are recently renovated spacious accommodations that feature an elegant mid-century modern décor.

All king deluxe rooms offer an intimate sitting area and a working desk. There is also an expansive ensuite marble bathroom with rainfall shower and a comfortable dressing area.

The Group rate is \$295.00. Rates are subject to a \$2.00 per night Seattle tourism assessment; plus state and local taxes totaling 15.6%. To book, please call reservations directly at 206-621-1700, ext. 3131 or Global Reservations at 1-800-441-1414. Identify yourself as an LADC member. Online booking is available using this link:

<https://aws.passkey.com/go/ladc2018>



# MEETING & EVENTS SCHEDULE

## WEDNESDAY, MAY 2ND

**Registration Day.** Conference registration materials will be available for pick up outside the Garden Room from 4:00–5:30 pm. Welcome Reception commences at 6:00 pm in the Garden Room. The Garden brings the outdoors in with lush tropical foliage, natural light, and a running waterfall.

## THURSDAY, MAY 3RD

**Morning CLE.** Lunch on your own. We will have a private tour of Chihuly Garden and Glass. Meet us there at 1:45 pm, and the tour will start promptly at 2:00 pm. You will be inspired by artist Dale Chihuly's innovation and passion. Dinner on your own.

## FRIDAY, MAY 4TH

**Morning CLE.** Lunch on your own. Meet at 1:45 pm at 614 First Avenue for Seattle's Most Unusual Attraction--Bill Speidel's Underground Tour. Our private tour begins at 2:00 pm. We will walk through intriguing subterranean storefronts and sidewalks entombed when the city rebuilt atop itself after the Great Fire of 1889. We will regroup for a pre-dinner reception in the Congress Room at 6:30 pm. The reception will be followed by a dine-around at some of Seattle's trendiest restaurants.

## SATURDAY, MAY 5TH

**Morning CLE.** Enjoy a free afternoon. Saturday night at Canlis will be a celebration of friends and exquisite dining. Join us at 7:30 pm for passed hors d'oeuvres and cocktails. We will be seated for dinner at 8:15 pm. Perched high above the city and enveloped in glass, the dining room boasts sweeping views of Lake Union and the Cascade Mountains. Canlis is a modern restaurant with a sense of history, place and time.

## SUNDAY, MAY 6TH

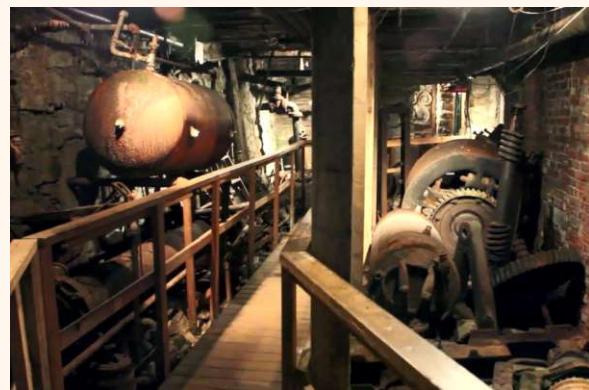
Safe travels back to New Orleans.



Chihuly Garden and Glass



Chihuly Garden and Glass



Seattle Underground Tour



Canlis Restaurant



# CLE SEMINAR REGISTRATION

## CLE SEMINAR REGISTRATION: MAY 2-5, 2018

To register, please visit the LADC Website at  
[www.LADC.org](http://www.LADC.org).

## REGISTRATION OPENS: January 18, 2018

LADC Registration fee: \$1125

Young Lawyer Registration fee: \$850

Spouse/Guest: \$625

## REGISTRATION FEE INCLUDES:

- CLE and Seminar Materials
- Breakfast Every Morning
- Wednesday Welcome Reception
- Friday's Pre-Dine Around Cocktail Reception
- Saturday's Farewell Dinner at Canlis
- Private Tour of Chihuly Garden and Glass
- Private Tour of Seattle's Underground

# 2018 LADC ANNUAL MEETING REGISTRATION FORM

(APPLICATION FORM ALSO AVAILABLE ONLINE AT [WWW.LADC.ORG](http://WWW.LADC.ORG))

Check all applicable boxes to calculate your registration fee.

☐ \$1125 Member

☐ \$850 Young Lawyer

☐ \$625 Spouse/Guest

☐ \$75 Spouse/Guest CLE credit

☐ \$150 Children 12-18

☐ \$80 Children 6-11

Total Registration Fee Enclosed \$ \_\_\_\_\_

NAME (for name tag) \_\_\_\_\_

FIRM \_\_\_\_\_

EMAIL \_\_\_\_\_ OFFICE PHONE \_\_\_\_\_

SPOUSE/GUEST NAME (for name tag) \_\_\_\_\_

CHILDREN'S NAMES (for name tag) \_\_\_\_\_

## PAYMENT METHOD

A check in the amount of \$ \_\_\_\_\_ is enclosed with this form. Make payable & mail this form to:

LADC, P.O. Box 9430, Metairie, LA 70055

Charge to (check one): ☐ Visa ☐ MasterCard ☐ American Express

Card # \_\_\_\_\_ Exp. Date \_\_\_\_\_ Security Code \_\_\_\_\_ Zip Code \_\_\_\_\_

Signature (as it appears on card) \_\_\_\_\_

## CANCELLATION POLICY

If the cancellation is received prior to March 31st, 100% of your seminar registration will be refunded.

Cancellations received after April 1st, 25% of your seminar registration will be refunded. Cancellations

received on or after April 16th will forfeit the full seminar registration fee. Cancellations must be made in writing and emailed to [kimberly@eventresourcesnola.com](mailto:kimberly@eventresourcesnola.com).

For Questions or Additional Information Please Contact:

Kimberly Zibilich at 504-208-5510 or [kimberly@eventresourcesnola.com](mailto:kimberly@eventresourcesnola.com)